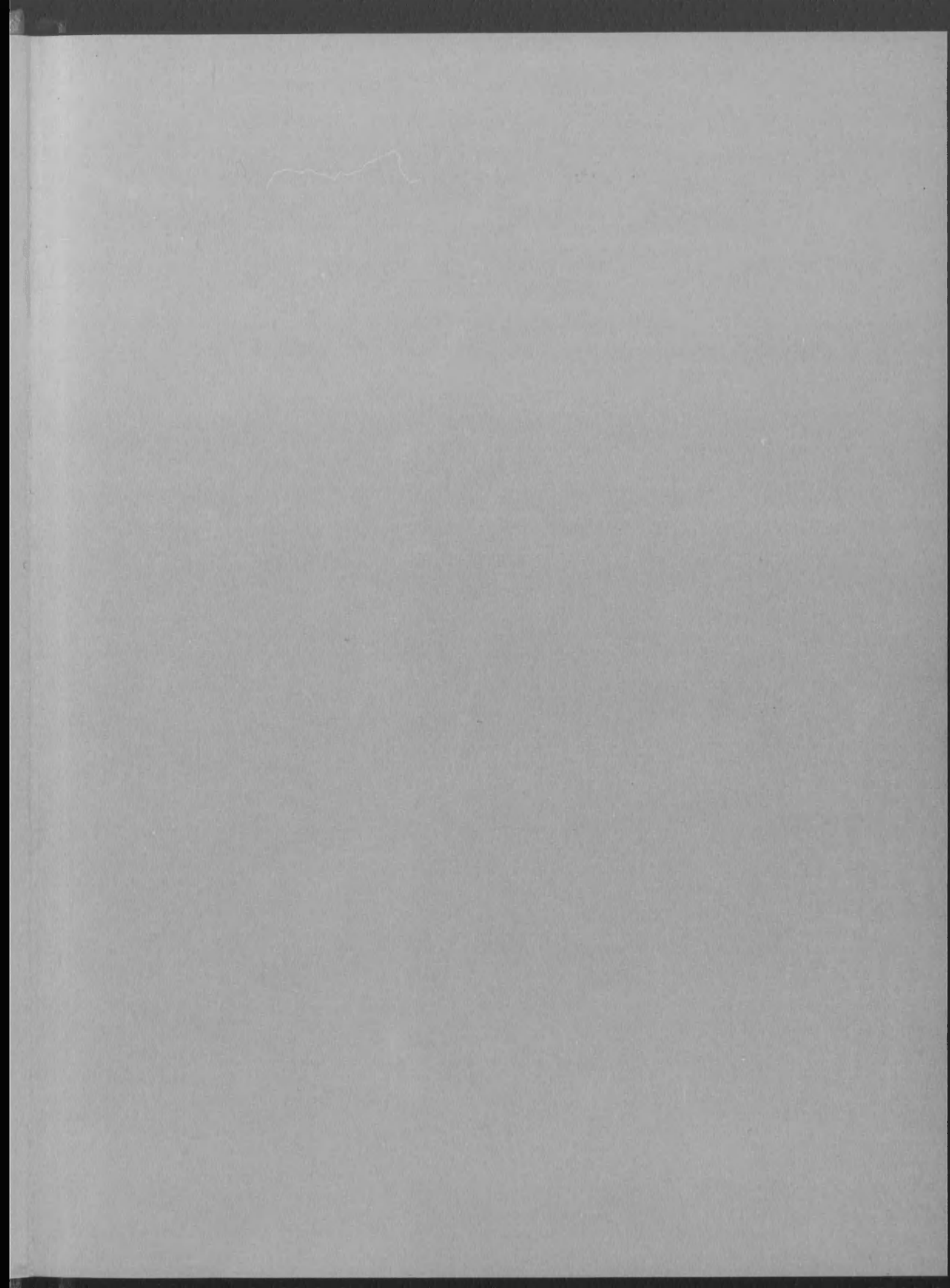


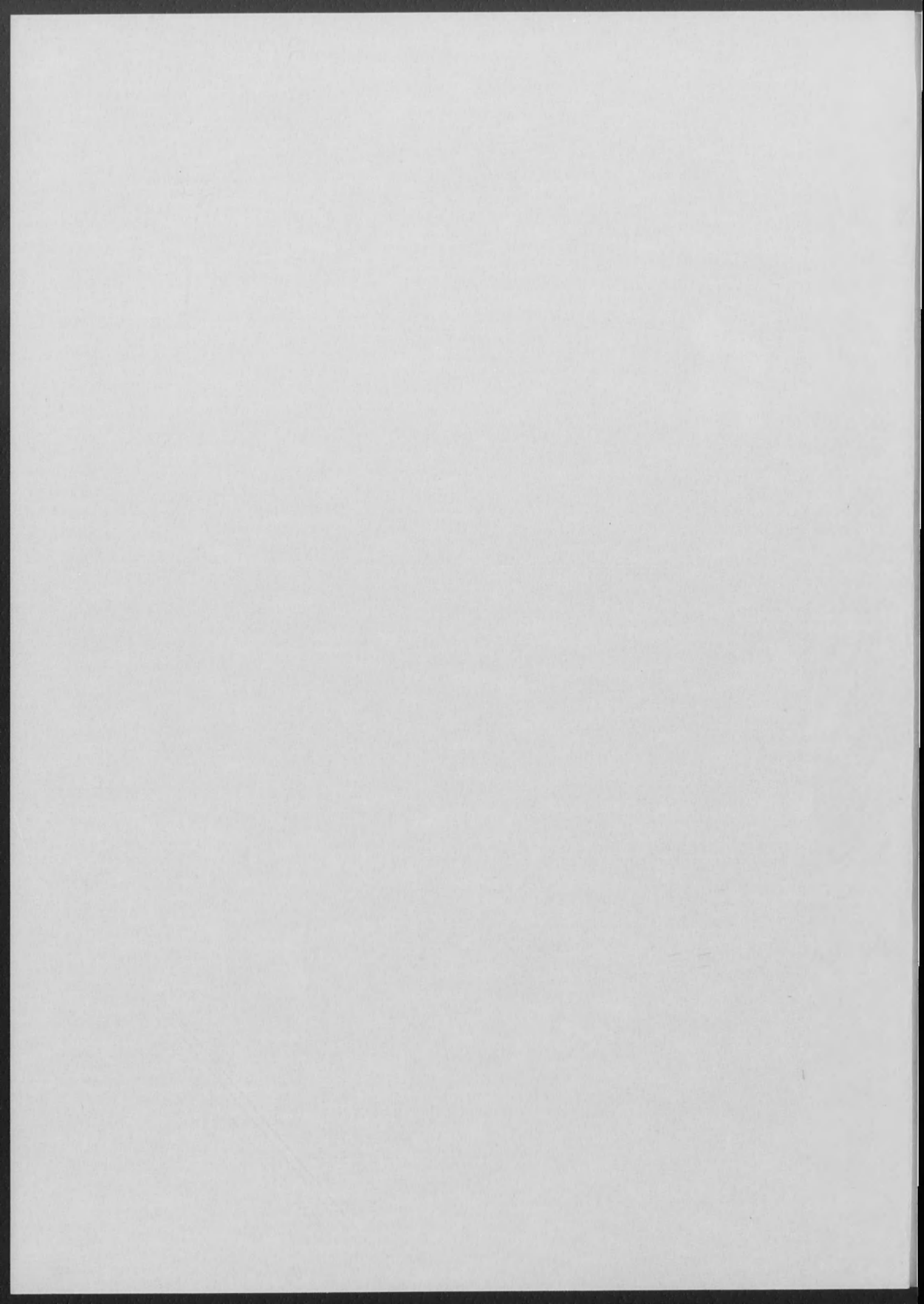
THE LION

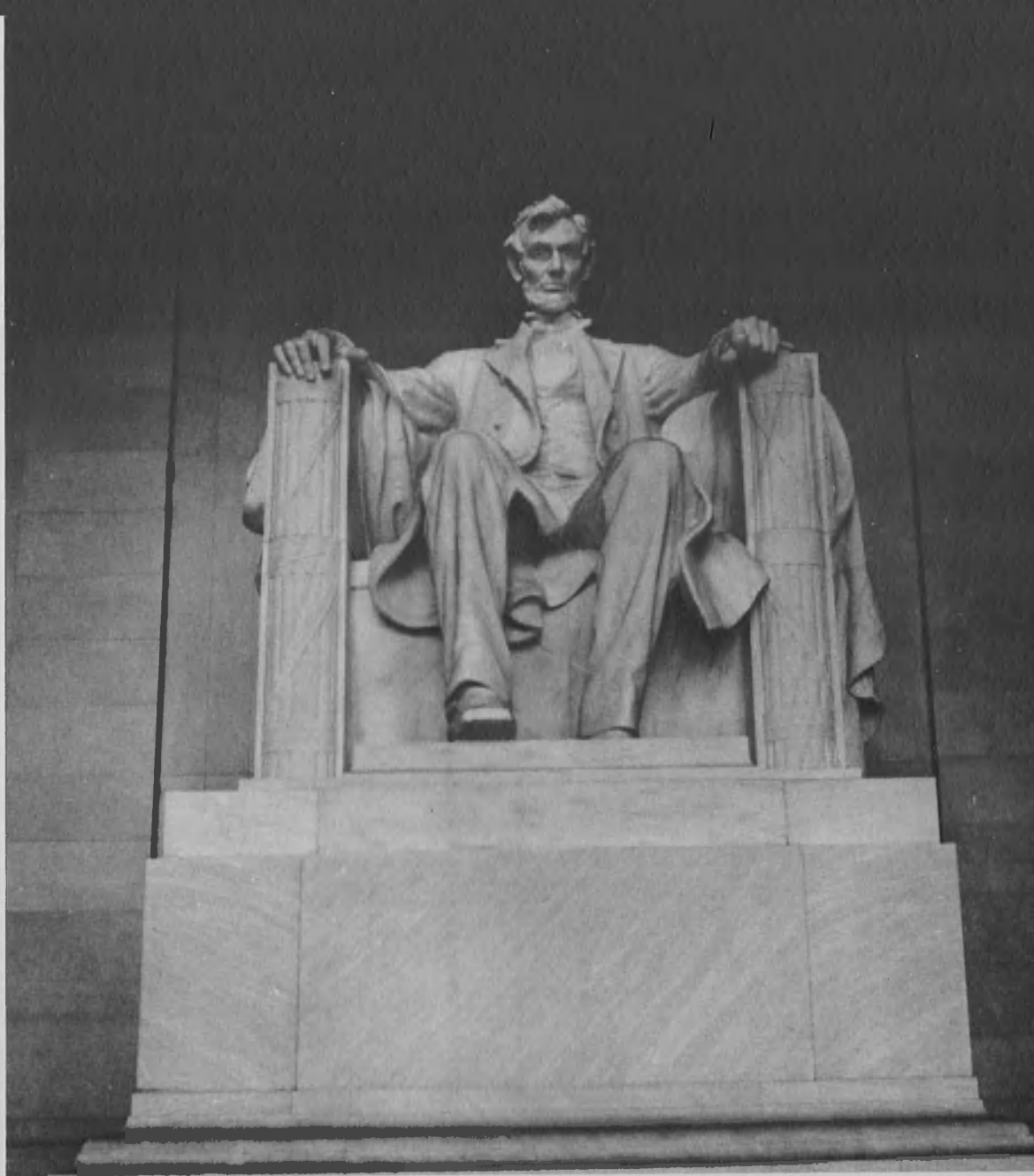


1961

SPECIAL COLLECTIONS
LANGSTON HUGHES MEMORIAL LIBRARY
LINCOLN UNIVERSITY
LINCOLN UNIVERSITY, PA 19357







If the Son shall make you free

Ye shall be free indeed



The

LIO

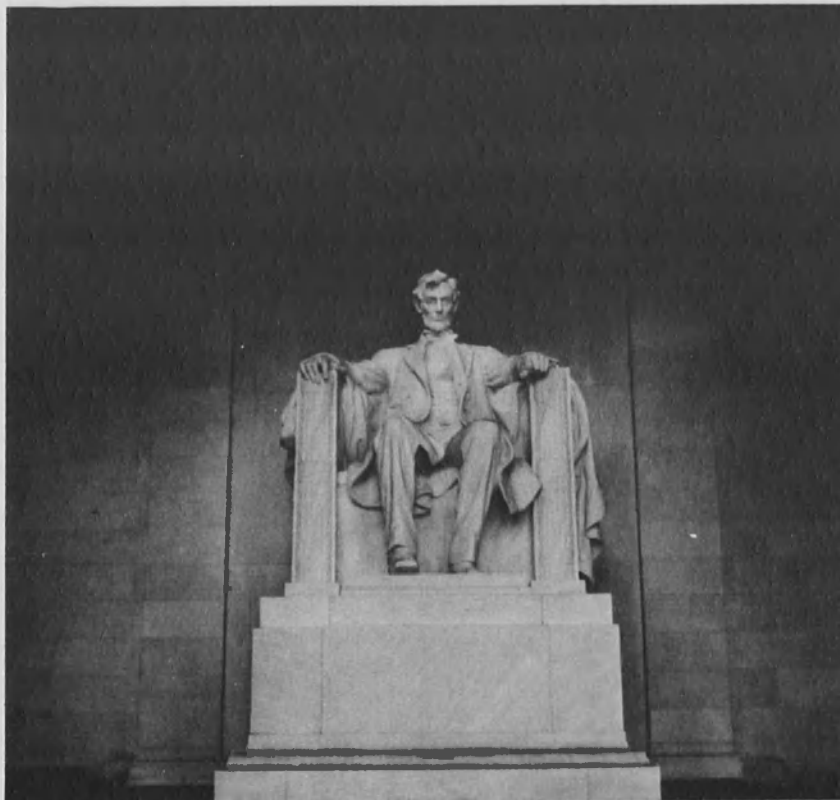
nineteen hundred

N

sixty-one

Published by the
Senior Class of
Lincoln University
Lincoln University,
Pennsylvania.

Foreword



Leaving this institution which has grown dear to us, we, the class of '61 are confident that we have spent here four worthy years, four of the best years of our lives.

We have molded our lives and minds to fit the pattern laid down for us by the great educators of the past. Therefore in seeking other success, we expect to be definite assets to our communities and to our countries.

This yearbook mirrors true experience, puts into print what we have accomplished, and tells of our aspirations. With the help of the entire campus community, we of the Lion Staff have sought to produce a yearbook rich in the traditions of Lincoln University, a prologue to the future. We wish to thank all who have helped to make us what we are, and all who have contributed so graciously to this our 1961 Lion.



DR. ELIZABETH (MOM) BEARDSLEY

D E D I C A T I O N

We, the class of 1961, dedicate this book to a woman who is not only a philosopher, teacher, mother and wife, but also to a scholar and educator with a love for mankind. The type of love that inspires one to contribute whatever he can to the welfare of humanity.

She has taught us that philosophy opens our minds to those possibilities which enlarge our thoughts and free them from prejudices; that philosophy diminished our feelings of certainty as to what things should be; that philosophy teaches us to substitute our narrow and personal aims for an active part in the greater aim, that aim being the freedom, equality, and prosperity of mankind.

It is with sincere appreciation for everything that we dedicate to this very modest and unassuming lady the 1961 Lion. Dr. Beardsley, we deem ourselves fortunate to have known you.

Dedication



ACTING PRESIDENT OF THE UNIVERSITY
DONALD C. YELTON
A.B., Hamilton; M.A., Georgetown;
M.S., Columbia

Dear Graduates of 1961 :

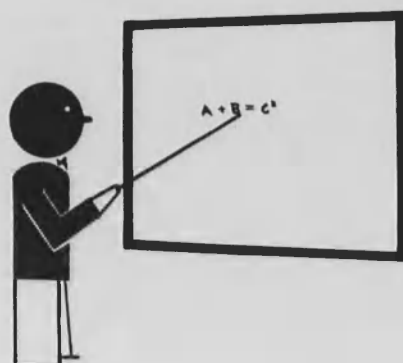
Among Lincoln's graduating classes you have the dubious distinction of having entered and departed under the aegis of a temporary administration. These years in which you have been tested and examined to prove your capacity have also been testing years, and years of self-examination, for Lincoln. She has been obliged to rethink her mission and to rechart her course, and to do so under circumstances of unexpected difficulty. That the task has been arduous and prolonged is an index of its magnitude; that Lincoln has been able to meet the challenge and to come through the difficult years is a tribute to the soundness of her tradition and to the devotion of many men who have kept faith with that tradition. The challenge has been met in an era of administrative impermanence--thus testifying all the more clearly to the toughness and viability of ideals and of institutions that worthily embody them.

You take your leave of Lincoln on the threshold of an era of permanent leadership and of the fulfillment of many things now in matrix. There are grounds for regret here; but there is also a special incentive--to which I hope you will respond--to maintain close bonds with your Alma Mater, to give your close attention to the events in store for her, and your liberal support to the efforts that will be required to bring them to maturity.

To the record of her graduates--as professional men, as citizens, as local alumni--Lincoln looks for the ultimate justification of her existence. For this justification--which has not been found wanting in the past--she now looks to you, the Class of 1961, who have received your instruction during these four years of transition from one epoch of her institutional existence to another.



Administration





Administration





Administration



Faculty



HENRY CORNWELL
Psychology



DeFOREST P. RUDD
Chemistry



WALTER E. WARING
French



WILLIAM R. COLE
Physics



PAUL KUEHNER
German



JAMES W. FRANKOWSKI
Mathematics



BENJAMIN SCHWARTZ
Classics



DIMBERU H. MERRIAM
Business



SAMUEL T. WASHINGTON
Accounting

Faculty



HAROLD F. GRIM
Biology



FREDERICK L. KEEFE
Religion



PETER J. HALL
Biology



STANLEY TSAI
Physics



SOPHY H. CORNWELL
Spanish



HOLMAN W. JENKINS
Political Science



JAMES B. MacRAE
Education



THOMAS M. JONES
History



ISSAC A. MAPP
Biology

Faculty



GRACE RIVERO
English



MANUEL RIVERO
Physical Educa.



LEROY D. JOHNSON
Chemistry



H. ALFRED FARRELL
English



ANDREW E. MURRAY
Church History



ARMSTEAD O. GRUBB
Spanish



ROBERT N. GARDNER
Physical Education

Yearbook Editor

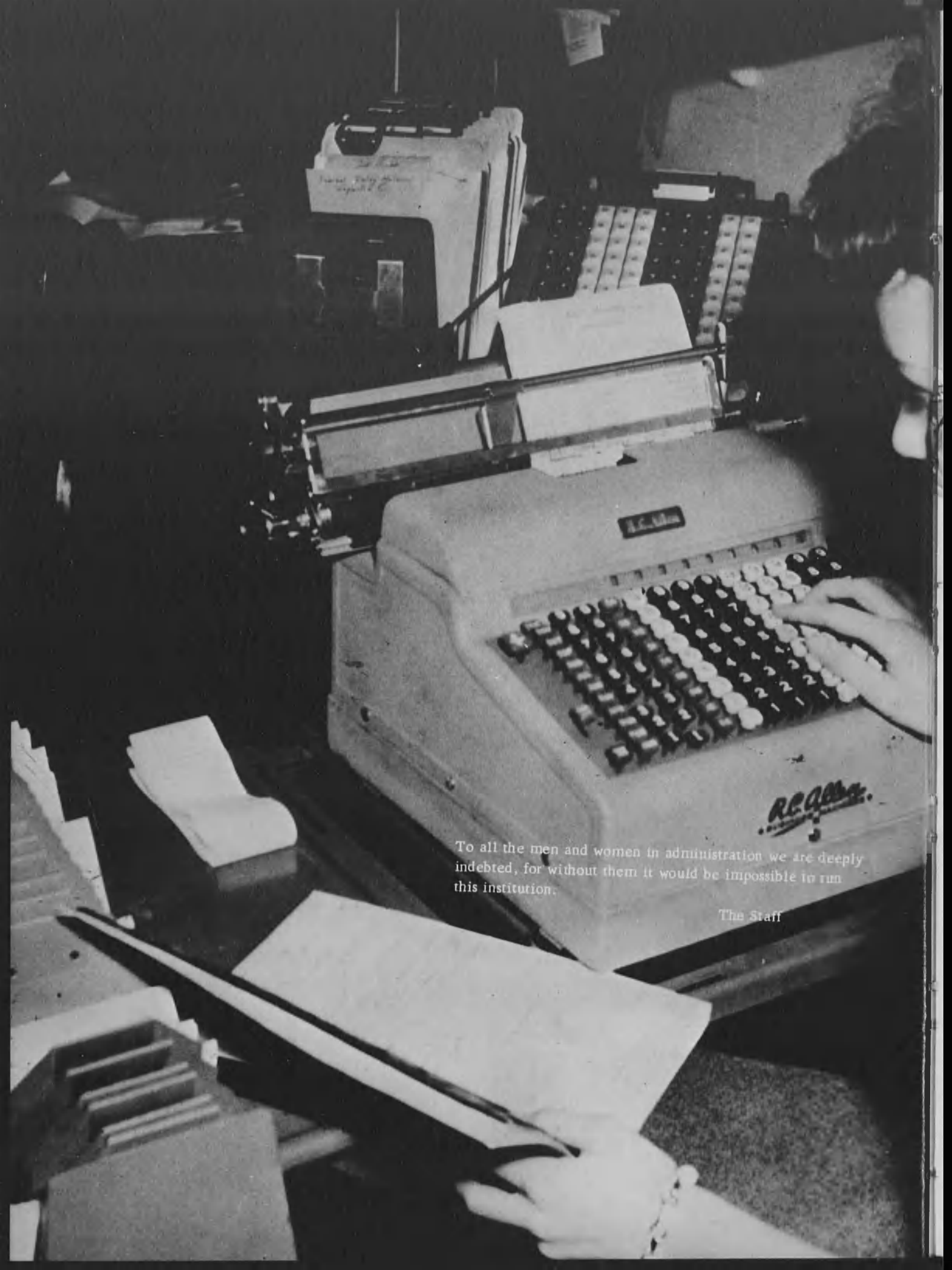


Robert Randleman

I would like to say thank you to all those who helped me with the yearbook, and I hope that the finished product will furnish them with pleasant memories with which to regale their children and their children's children.

My especial thanks go to these classmates: Charles Stewart, Herman Stephenson, and William Ingram.

Editor-in-Chief	Robert Randleman
Associate Editor	Charles Stewart
Feature Editor	Herman Stephenson
Sports Editor	William Ingram



To all the men and women in administration we are deeply indebted, for without them it would be impossible to run this institution.

The Staff



Class Advisor

ROBERT E. SMITH
A.B., Lincoln University; M.A., University of
Pennsylvania. Instructor in English.

To the Class of 1961:

The ultimate of man's thinking is true knowledge. Our minds, governed by a truly Christian approach, have received an education in feeling, in delight, and in the sharing of the goods of life, and thus we promote the possibilities of human excellence. We have discovered that Truth gains more even by the errors of one who, with due study and preparation, thinks for himself, than by the true opinions of those who hold them only because they do not suffer themselves to think. Let us recognize for ourselves facts amid appearances and shape change, rather than mouth desire. And this will hold even more of truth in the community at large as on the campus.

May the level of your maturity be of such strength and courage to cheer, raise, and guide you beyond your present satisfactions and may the slow task of observation direct you toward great aims and greater truths.





Seniors



Class Officers



BAIN



JAY



HARRIS



McNEILL

.....

President	Earle McNeill
Vice President	Granville Bain
Secretary	David Jay
Treasurer	Edward Harris

.....



GORDON G. ALEXANDER
125 North 50th Street
Philadelphia, Pennsylvania
Activities . . . Glee Club 1,2,3,4;
Ensemble 3; Social Science Club
3; N.A.A.C.P. 1; Alpha Phi Alpha
1,2,3,4; Pan-Hellenic Council 3;
Chemistry Club 3; Baseball 1;
Track 2.

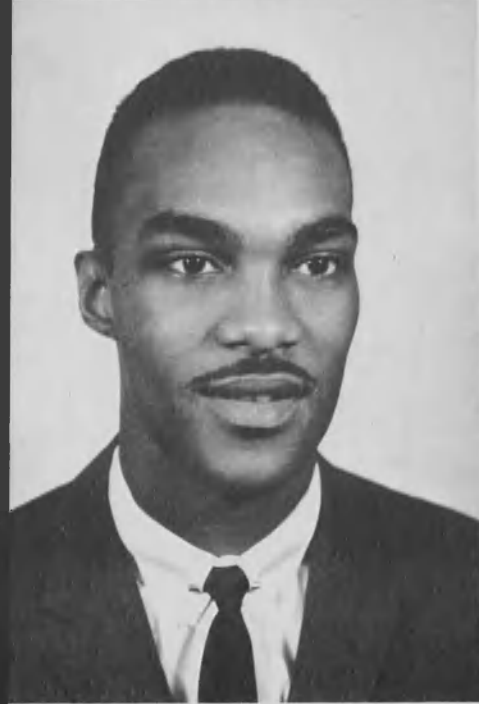
GRANVILLE C. BAIN
Nassau, Bahamas
Activities . . . Class V. President
3,4; Student Senate Secretary 4;
Canterbury Club 1,2,3; N.A.A.C.P.
3,4; Omega Psi Phi 2,3,4; Baseball
Team 1; Cross Country 1,2; Wres-
tling 1,2,3,4; Varsity Club 3,4;



FREDERICK BARON
Buxton Demerara
British Guiana, S.A.
Activities . . . Class Pres. 1,2;
Y-Cabinet 1,2,3,4; V. Pres. 3;
Pres. 4; Glee Club 1,2,3; Ensemble
1,2; Social Science Club 4;
Philosophy Club 4; Inter. Students'
Assoc. 1,2,3,4; Dorm. Proctor 3,4;
Personnel Committee 4; Fresh-
man Adviser 3,4.

SMITH J. BASSEY
Etinan
Eastern Nigeria
Activities . . . Y-Cabinet 3,4;
Philosophy Club 4; Inter. Students'
Assoc. 2,3,4; Soccer Team 3; Ten-
nis Team 2,3,4; Nigerian Students'
Union--V. Pres. 3,4; American
Students' Union 2,3.





SYLVESTER L. BENNETT
512 E. 112th Street
Cleveland, Ohio
Activities . . . Y-Cabinet 2,3;
Political Science Club 1,2; Social
Science Club 1,2; Philosophy Club
3; Cross Country 1.

LEONARD H. BILLUPS
829 22nd Street
Newport News, Virginia
Activities . . . Y-Cabinet 2,3;
N.A.A.C.P. 1,2,3,4; Lion Staff 4;
Omega Psi Phi 2,3,4; Cehmistry
Club 2,3,4; Track 2,3,4; Wrestling
1,2,3,4; Varsity Club 3,4.



WINSTON L. BLACKETT
Activities . . . Y-Cabinet 4;
Political Science Club 1,2,3,4;
Inter. Students' Assoc. 1,2,3,4;
Lincoln Players 3; Tennis Team
1,2.

MILTON BLUITT
1258 West 34th Street
Indianapolis, Indiana
Activities . . . Y-Cabinet 4; Amer-
ican Assoc. of Chemical Chemist
4; History Club 4.





WALTER J. BOGAN
998 Park Avenue
Westbury, New York
Activities . . . Newman Club 1,2,
3,4; Pres. 3,4; Alpha Phi Alpha
2,3,4; Dean of Pledges 3;
Chemistry Club 1,2,3,4; Sec. 4.



ANTHONY E. BOWENS
38 High Street
Great Barrington, Mass.
Activities . . . Y-Cabinet 1,2,3,4;
Lion Staff 4; Lincoln Players 4;
Chemistry Club 1; Biology Club 3;
Cross Country 1; Track 4; Varsity
Club 1,2,3,4; Math Club 4.



IVAR F. BROWNE
374 W. Middle Street
New Bedford, Mass.
Activities . . . Canterbury Club 3,4;
Y-Cabinet 1,2,3,4; Political Science
Club 4; N.A.A.C.P. 3,4; Lincolnian
Staff 3,4; Editor 3; Alpha Phi Alpha
2,3,4; Basketball 1,2,3; Track 1,2,
3,4; Soccer Team 3,4; Varsity Club
4; Director of Intramural Athletics
1,2,3,4.

NORMAN G. CAMPBELL
145-07 Glassboro Avenue
Jamaica, New York
Activities . . . Newman Club 3,4;
Lincolnian Staff Sports Editor 4;
Lincoln Players 3,4; Baseball Team
2,3; Cross Country 1,2,3,4; Track
Team 1,2,3,4; Captain 3; Varsity
Club 1,2,3,4.





LEONARD S. CLOSSON
914 Lincoln Avenue
West Chester, Pennsylvania
Activities . . . History Club 1,2;
Lincoln Players 2; Lion Staff 4;
Basketball 1,2,3,4; Track 1,2;
Varsity Club 1,2,3,4.



ERIC COATES
R.D. #3
Oxford, Pennsylvania
Activities . . . Political Science
Club 3,4; Philosophy Club 3,4;
Soccer 3,4.

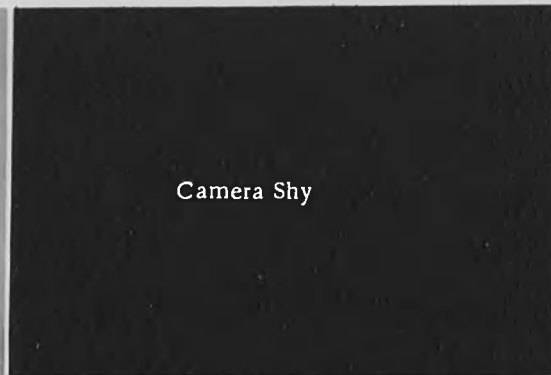


DAULAT DAMANIK
D.L. Madiapahitj
Pematangsiantar, Indonesia
Activities . . . Inter. Students'
Assoc. 2,3,4; Soccer Team 2,3.

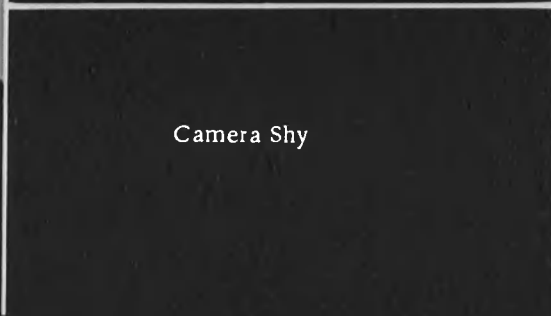
JAMES A. DONALDSON
Route 2, Box 26
Madison, Florida
Activities . . . Class Treas. 3;
Student Senate 1,2,3,4; Pres. 4;
NAACP 1,2; Parliamentarian 3,4;
Alpha Phi Alpha 2,3,4; Treas. 3;
Pan-Hellenic Council 2; Parl. 3,4;
Beta Kappa Chi 4; Football 3,4;
Wrestling 1,2,3.



Camera Shy



Camera Shy





MAURICE B. K. EDMED, JR.
4926 Central Avenue, N.E.
Washington, D.C.
Activities . . . Canterbury Club 4;
Social Science Club 4; Sec. 4;
N.A.A.C.P. 4; Lincoln Players 4;
Stage Manager 4; Community
Players 4; Stage Crew 4.

SUNDAY I. ETTE
Eket, Eastern Nigeria
West Africa
Activities . . . Y-Cabinet 4;
Political Science Club 2,3; Philoso-
phy Club 2; Inter. Students' Assoc.
2,3; Chemistry Club 2,3,4; Soccer
Team 1; African Students' Union
4, Pres. 4.



HUGH A. EWING
Grand Tuak
Turk Islands, West Indies
Activities . . . Inter. Students'
Assoc. 1,2,3; Soccer Team 1,2,3,4;
Captain 4; Varsity Club 3,4.

KENNETH M. FINNEY
Uniontown, Penna.
Activities . . . Football Team 3;
Varsity Club 3,4.





WEBSTER M. FITZGERALD

1436 North 55th Street
Philadelphia 31, Pa.

Activities . . . Class Officer--Vice President 1; Student Senate 1,2; Y-Cabinet 1,2; Political Science --President 4, Secretary 3; Philosophy Club 1,2,3,4; Omega Psi Phi 3,4; Debating Team--Captain 2,3,4.

ROSS N. FORD

1428 South 23rd Street
Philadelphia, Pa.

Activities . . . Student Senate; Social Science Club 2,3,4; Philosophy Club 4; N.A.A.C.P. 3,4--Vice President; Lion Staff 4; Lincolnian Staff 2,3,4--Circulation Manager; Kappa Alpha Psi 2,3,4--Vice President 3, Secretary; Basketball 1,2,3,4.



JOHN W. HAINES

7306 Forrest Way St.
Pittsburgh, Pa.

Activities . . . Alpha Phi Alpha 2,3,4; Treas. 3; Wrestling Team 1,2,3,4; Captain 2,3,4; Mathematics Club 4; NAACP 1,2,3,4.

EDWARD K. HARRIS

2534 Diamond Street
Philadelphia Penna.

Activities . . . Alpha Phi Alpha 2,3,4; Pres. 4; Basketball 1,2,3,4; Capt. 2; Varsity Club 1,2,3; Treas. 4.





WILLIAM B. INGRAM
 17 Griffith Heights
 Aliquippa, Pennsylvania
 Activities . . . Y-Cabinet 2,3,4;
 Glee Club 1,2,3,4; President 4;
 Student Director 4; Social Science
 Club 4; Lion Staff 4; Feature Editor-
 Lincolnian Staff 4; Alpha Phi
 Alpha 3,4; Football Team 1,2;
 Statistician--Basketball Team
 3,4. Freshman Advisor 4.

WILLIAM L. JACKSON
 514 N. 36th Street
 Philadelphia, Penna.
 Activities . . . Y-Cabinet 1,2,3,4;
 Canterbury Club 2,3,4; Glee Club 2;
 Accompanist 2; Lion Staff 4--
 Lincolnian Staff 4; Lincoln Players
 2,3,4--President 3; Deans list.



ABDUL A. JALLOH
 Sierra Leone, West Africa
 Activities . . . Y-Cabinet 4;
 Political Science 2,3,4--V. Pres. 4;
 Philosophy Club 2,3,4; Inter. Stu-
 dents Assoc. 2,3,4--Sec. 3; Soccer
 Team 2.

DAVID W. JAY
 1233 Fritz Drive
 Bethlehem, Penna.
 Activities . . . Class Officer 3,4--
 Sec. 3,4; Y-Cabinet 3,4; Social
 Science Club 4; Lincolnian Staff
 --Editor; Kappa Alpha Psi 2,3,4;
 Baseball Team 1,2,3,4--Captain 4.





RAYMOND W. JOHNSTON

220 S. 4th Street
Easton, Pennsylvania
Activities . . . Glee Club 3; Beta
Sigma Tau 2,3,4; Pres. 3,4; Treas-
urer--Pan Hellenic Council 3;
Cross Country 2.



Camera Shy



DAVID B. KENT

661 North Frazier Street
Philadelphia, Penna.
Activities . . . Canterbury Club
1,2,3,4; Political Science Club 4;
Philosophy Club 2,3; President 4;
N.A.A.C.P. 4; Kappa Alpha Psi
3,4.



GEORGE H. KENT

18 W. Bethel Street
Hagerstown, Maryland
Activities . . . Student Senate 3,4;
Y-Cabinet 2,3,4; Philosophy Club
2; Inter. Students' Assoc. 1; Assist-
ant Business Manager Lincolnian
Staff 3,4; Alpha Phi Alpha 2,3,4;
Chaplain 3; Corr. Sec. 4; Beta
Kappa Chi 3,4; Football Team 1;
Pan-Hellenic Council 3,4.

WILLIAM F. KING

204 Peshine Avenue
Newark, New Jersey
Activities . . . N.A.A.C.P. 3,4;
Omega Psi Phi 2,3,4; Chaplain 3;
President 4; Pan-Hellenic Council
4; Chemistry Club 1,2,3,4; Football
Team 1,2,3,4; Capt. 4; Baseball
1,2; Varsity Club 1,2,3,4.





WILLIAM E. IAKINS
1123 South 46th Street
Philadelphia 43, Pa.
Activities . . . Canterbury Club
3,4; Chess Club 4.



DARRICK S. LEACOCK
1609 City Place
Atlantic City, New Jersey
Activities . . . Y-Cabinet 1,2,3,4;
Philosophy Club 1; Alpha Phi
Alpha 1,2,3,4; Biology Club 1;
Track 1.



SPENCER H. LEWIS
2132 Carpenter Street
Philadelphia 46, Pa.
Activities . . . Student Senate 3,4;
Y-Cabinet; N.A.A.C.P.; Lincoln-
ian Staff--News Editor 4; Kappa
Alpha Psi--President 4, Secretary
3; Pan-Hellenic Council.

LEONARD K. LOCKLEY
Activities . . . Student Senate 1,2,
3,4; Biology Club 1,2,3; Football
Team 1,2,4; Tennis Team 1;
Varsity Club 2,3; Secretary 4.



Camera Shy





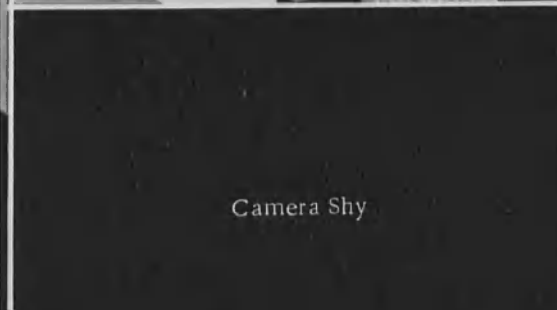
RONALD M. McCASKILL
6349 McCallum Street
Philadelphia, Pennsylvania
Activities . . . Student Senate 4;
Glee Club 1,2,3,4; Y-Cabinet
2,3,4; Sec. 4; Ensemble 2,3;
Political Science Club 2,3,4; Social
Science Club 3; Lion Staff 4; Lin-
colnian 4; Football Team 1.

EARLE D. McNEILL
1402 S. 23rd Street
Philadelphia, Penna.
Activities . . . Class Pres. 4; Stu-
dent Senate 2; Y-Cabinet 1,2,3,4;
Glee Club 1,2,3,4; V. Pres. 2; Sec.
3; Ensemble 1,2,3; Social Science
Club 3,4; Philosophy Club 4;
N.A.A.C.P. 3,4; Lion Staff 4;
History Club 4; Track 1; Biology
1.



HAROLD R. MINUS
420 W. 130th Street
New York, New York
Activities . . . Newman Club 1,4;
Alpha Phi Alpha 2,3,4; V. Pres. 3;
Dean of Pledges 4; Beta Kappa Chi
3,4; V. Pres. 4; Chemistry Club
1,2,3,4; Treas. 3; Pres. 4; Basket-
ball Team 1.

LAWRENCE P. NEAL
Philadelphia, Penna.
Activities . . . Y-Cabinet 2,3,4;
Political Science Club 3,4;
Philosophy Club 2,3,4; Drama Club
3,4.



Camera Shy



MARK G. PARKS
 372 Grand Ave.
 Brooklyn 38, New York
 Activities . . . Social Science Club
 2,3,4; Philosophy Club 2,3; NAACP
 1; Lincoln Players 3; Biology Club
 1,2.



ROBERT L. RANDLEMAN
 539 W. 150th Street
 New York, New York
 Activities . . . Y-Cabinet 1,2,3,4;
 Newman Club 1,2,3,4; Glee Club
 1,2,3,4; Ensemble 3,4; Philosophy
 Club 4; Inter. Students Assoc. 1;
 NAACP 4; Lion Staff--Editor 4;
 Lincolnian Staff 1,2,3,4--Reporter
 2,3; Lincoln Players 3,4; Assistant
 Stage Mang.



OBIE A. RAY
 1213 Lombard Street
 Philadelphia, Penna.
 Activities . . . Newman Club 1,2,3;
 Philosophy Club 1; Alpha Phi Alpha
 3,4; Chemistry Club 2; Cross
 Country 1; Soccer 3; Tennis Team
 4; Math Club 4.

JOHN M. ROYALL
 37 Grant Street
 Hempstead, New York
 Activities . . . Y-Cabinet 3; Can-
 terbury Club 2,3,4--V. Pres. 3;
 Political Science Club 3,4;
 Philosophy Club 4; Omega Psi Phi
 2,3,4; Chaplain 3,4.





ALTON R. SHERROD
2549 N. Gratz Street
Philadelphia, Pennsylvania
Activities . . . Glee Club 2,3;
Omega Psi Phi 3,4; Track 1.



MEREDITH F. SIRMANS
500 West 140th Street
New York 31, N. Y.
Activities . . . Philosophy Club--
Secretary 4; Lion Staff 4; Lincoln
Players 4; Chemistry Club 4; Ten-
nis Team 4.



HERMAN L. STEPHENSON
1033-28th Street
Newport News, Virginia
Activities . . . Student Senate--
Vice President 4; Y-Cabinet 2,3,4;
N.A.A.C.P. 3,4; Omega Psi Phi 3,4;
Pan-Hellenic Council 3,4; Baseball
Team 2; Track 1; Varsity Club 3,4;
Mathematics Club 4.

CHARLES A. STEWART
24-42 98th Street
East Elmhurst 69, N. Y.
Activities . . . Y-Cabinet 1,2,3,4;
Glee Club 4; Social Science Club
2,3; N.A.A.C.P. 4; Lion Staff 4;
Omega Psi Phi 2,3,4; Pan-Hellenic
Council 2,3.





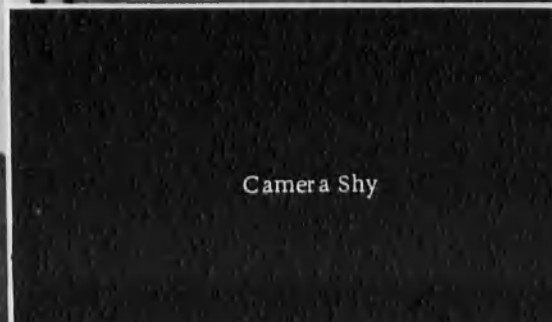
WALTER SULLIVAN JR.
1460 N. Redfield Street
Philadelphia, Penna.
Activities . . . Class Officer--Pres. 3; Student Senate--Treas. 3; NAACP 3,4; Kappa Alpha Psi 2,3,4 --Provincial V. Polemarch 4; Pan-Hellenic Council 2,3,4; Football 1; Basketball 1,2,3,4; Track 1,2,3,4; Varsity Club 2,3,4.

ULYSSES J. WARWICK
519 W. 143rd Street
New York, New York
Activities . . . Y-Cabinet 3,4; Student Senate--Chaplain 4; Canterbury Club 3,4,--Pres.; Ensemble 3,4; Glee Club 3,4,--Asst. Director 4; NAACP 4; Lion Staff 4; Lincolnian 4; Lincoln Players--Asst. Direc. 4; Tennis Team 3,4; J.M. Dickey Society--Sec. 4.



JAMES E. WASHINGTON
629 Fifth Street
Donora, Penna.
Activities . . . Y-Cabinet--Corresponding Sec. 1,2,4; Social Science Club--Pres. 4; Philosophy Club 3,4; NAACP 3; Biology Club 3,4; Beta Kappa Chi; Who's Who.

EDET A. UDO
Ikot Ese, Uyo, Nigeria
Activities . . . Political Science Club 2,3; Philosophy Club 2,3; History Club 2,3,4; Biology Club 2,3,4; Union Nigerian Students in Amer.--Pres. 3,4.





EDDY A. WILLIAMS

Radner Road
Wayne, Pennsylvania
Activities . . . History Club 1,2,
3,4; Phi Beta Sigma 2,3,4; Pan-
Hellenic Council--President 3,4;
Cross Country--Captain 2,3,4;
Track 1,2,3,4; Wrestling Team
1,3,4; Varsity Club 1,2,3,4.

EDWARD A. WOODS

216 W. 141 Street
New York, New York
Activities . . . Newman Club
2,3,4; Treas. 3; Philosophy Club
2,3; Kappa Alpha Psi 3,4; Biology
Club 3,4; Tennis Team 2,3,4.



Senior Rabble



Senior Rabble





JUNE



SEPTEMBER



MAY



APRIL



MARCH



FEBRUARY



JANUARY



OCTOBER



NOVEMBER



DECEMBER

U
n
d
e
r
c
l
a
s
s
m
e
n

Junior Class

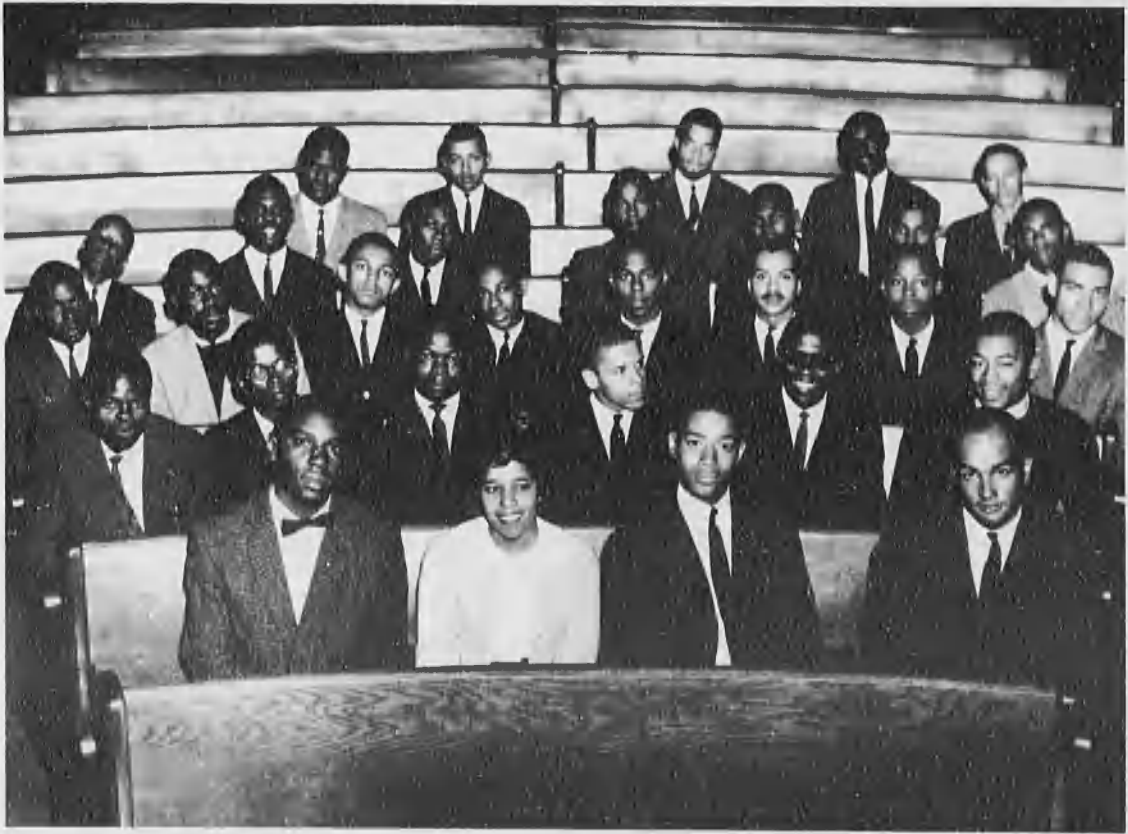


1st ROW: C. Leftridge, N. Poe, C. Andrews, W. McKelvin, F. Smith, T. Butcher. 2nd ROW: J. Dickerson, D. McMeans, R. Sawyer, S. Adams, V. Uffen. 3rd ROW: K. Collins, W. Coleman, W. Cuff, R. Hudson, F. Miller.

OFFICERS

John Simpkins	President
Donald McMeans	Vice-President
Wilmore Coleman	Secretary
William Garrett	Treasurer

Sophomore Class



1st ROW: S. Murray, B. Suthern, E. Manderville, G. Brooks. 2nd ROW: E. Ohemeng, A. Hamilton, E. Sam, C. Gibson, J. Butler, M. Lawrence. 3rd ROW: H. Smith, C. Morris, W. Ravenell, M. Bates, R. Lawrence, F. Constant, C. Pratt, R. Harrison. 4th ROW: A. Edmiston, R. Smith, C. Yancy, R. Covington, W. Scott, J. Davis, S. Nelson. 5th ROW: W. Gittens, T. Carter, H. Cunningham, G. Patterson, H. Thompson.

OFFICERS

Charles Ballard	President
Edgar Manderville	Vice-President
Bonnie Suthern	Secretary
Sylvester Murray	Treasurer

Freshman Class



1st ROW: G. Stephens, A. Scott, W. Floyd, J. Woods, M. Felton, J. Street. 2nd ROW: R. Diggs, C. Small, G. Ramsey, R. Blackston, A. Bragg, W. Trent, T. Hayden. 3rd ROW: C. Haygood, J. Douglas, D. Brooks, R. Walker, L. Brown, W. Tilmon, M. Riggs, G. Reece. 4th ROW: L. Parham, C. Philips, A. Carrol, H. Shelton, J. Alexander, R. Abassa, D. Kimani, A. Opera, H. Rissing. 5th ROW: G. Alexander, E. Norwood, K. Hill, W. Young, C. Woodard, J. Thompson, J. Borden, A. Sheehan, K. Williams, S. Smith. 6th ROW: A. Terry, L. Best, J. Carpenter, B. Shiquro, R. Dixon, L. Randolph, L. Tull, R. Lovelace. 7th ROW: V. Dickson, J. Loadholtz, J. Pruitt.

OFFICERS

Ronald Walker	President
Donald Brooks	Vice-President
Cleophas Haygood	Treasurer
John Douglas	Senator

Φ



Clubs

Ψ

Γ



Activities



Π



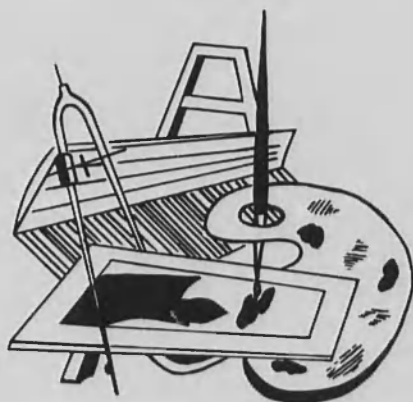
MARY DODD BROWN MEMORIAL CHAPEL . . .



Lion Staff



SEATED, Left to Right: E. McNeill, M. Sirmans, R. Randleman, D. Jay, C. Stewart. STANDING: U. Warrick, N. Campbell, I. Browne, A. Bowens, R. McCaskill.



Lincolnian Staff



SEATED, Left to Right: U. Warrick, D. Jay, L. Edmunds, I. Browne. STANDING: S. Murray, C. Stewart, W. Gittens, N. Campbell, R. McCaskill.

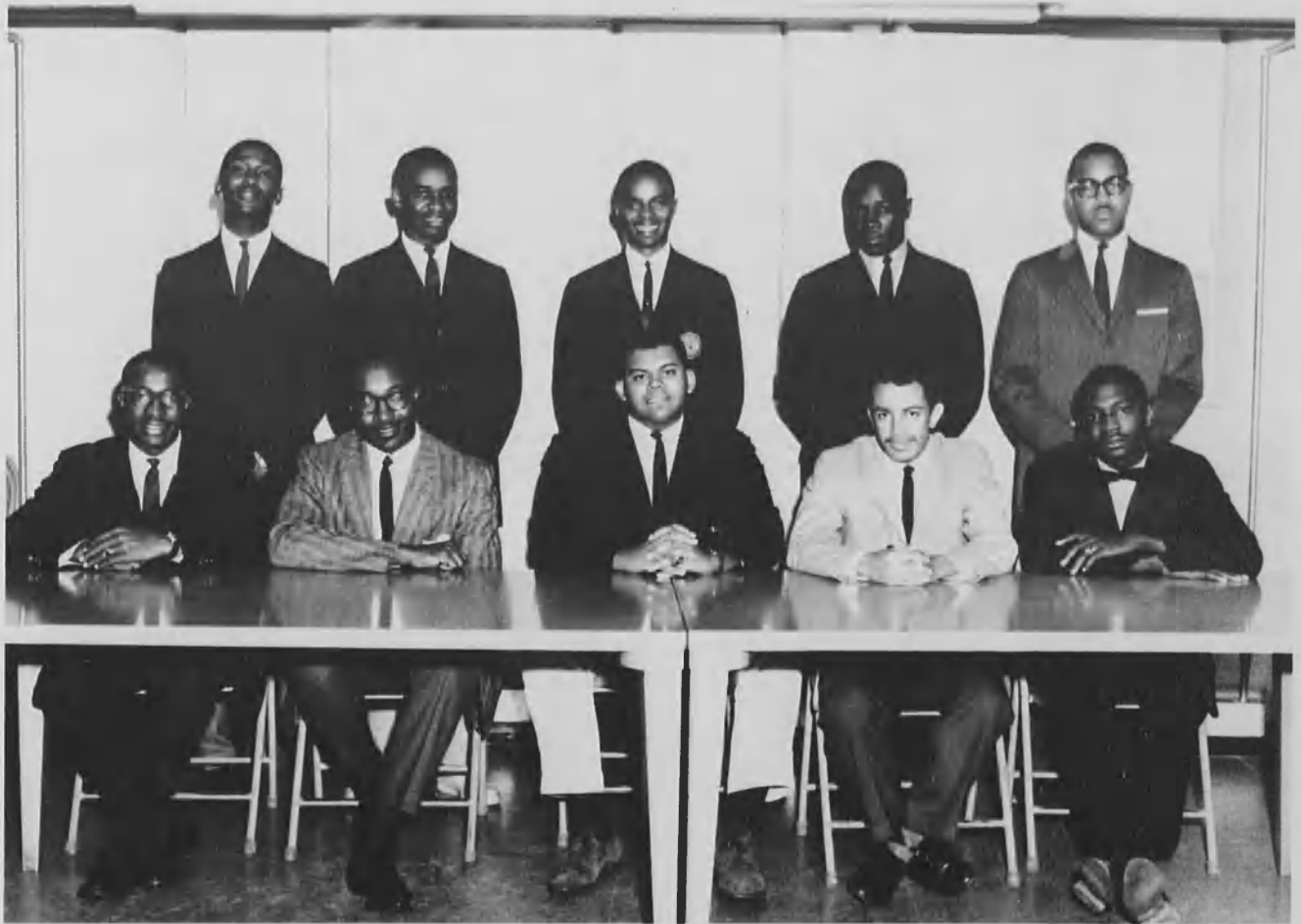
STAFF

Editor-in-Chief	David W. Jay
Associate Editor	Gary Patterson
Feature Editor	William B. Ingram
Sports Editor	Norman Campbell
Business Manager	John W. Haines

"We endeavor to represent a broad scope of college activities surrounding the events, interests, opinions and objectives occurring within the lives of the student body."
The Lincolnian brings to the community an accurate report of current events on campus, controversial points of world importance, sports and literary works.



Biology Club



SEATED, Left to Right: L. Lockley, E. Woods, G. Kent, G. Jones, G. Bain. STANDING: H. Stephenson, E. McNeill, U. Warrick, A. McNeal, J. Washington.

While not maintaining the pace it set last year, the Biology Club is still functioning. The goals of the Biology Club are to give the students of the biological sciences a more practical knowledge of the science by discussion, lectures by prominent individuals and field trips to various localities.

OFFICERS

Howard Kent	President
George Jones	Vice-President
Edward Woods	Secretary



Chemistry Club



SEATED, Left to Right: W. King, H. Minus, W. Bogan. STANDING: M. Sirmans, N. Thompson, R. Edwards, M. Abu-Hussein, S. Ette, J. Douglass.

Changes in ideas and methods of promotion of such ideas produce needs for changes to accommodate these developments in our lives. Due to our rapid development we have found a need for organizations to suffice these needs. The Chemistry Club is one of these. The interest of the members in the club can be measured by the progress of the Chemistry Club.

The objective is to allow persons interested in this field a chance to gain some advanced knowledge on the graduate level. The Club has extended its functions to group and panel discussions for the general interest of the campus community and field trips for the members.

OFFICERS

Harold Minus	President
William King	Vice-President
Walter Bogan	Secretary



Beta Kappa Chi



Left to Right: H. Minus, G. Kent, J. Donaldson.

This organization is based on scholarly achievement and is honorary and national in scope. Beta Kappa Chi grew from an honorary fraternity at Lincoln University into a national honorary scientific society. The purpose of Beta Kappa Chi is to stimulate and promote interest in scientific education and guidance of undergraduate training in all fields of science and to dedicate a reasonable portion of time to graduate study for greater efficiency and better service in the different scientific fields.

OFFICERS

Howard Kent	President
Harold Minus	Vice-President
James Washington	Secretary
James Donaldson	Treasurer



Newman Club



SEATED, Left to Right: M. Evans, W. Bogan, R. Randleman. STANDING: V. Ashe, H. Minus, O. Ray, N. Campbell.

The Newman Club, a club of Catholic Culture and Fellowship, is organized to "deepen the spiritual and enrich the temporal lives of its members through a balanced program of religious, intellectual, and social activities," to weld the Catholic Students into a common union; and to assist the students whenever possible. Under the guiding hands of Mrs. Gladys Renwick, the club has become a foremost instrument for forming beneficial friendship on an interracial plane.

OFFICERS

Walter Bogen	President
Harold Levister	Vice-President
Cyril Edoho	Chaplain



Canterbury Club



SEATED, Left to Right: G. Jones, E. Manderville, U. Warrick, G. Bain, J. Royall. STANDING: M. Felton, A. Pickering, M. Edmead, I. Browne, R. Sawyer.

Another religious club here at Lincoln is the Canterbury Club. It too is an example of the preservation of the religious heritage. A club of Episcopalian culture and fellowship, it is organized to promote a better understanding of the spiritual aspects of the Episcopalian Church.

OFFICERS

Jack Warrick	President
Edgar Manderville	Vice-President
Granville Bain	Secretary



International Students Association



Conscious of the important role former members of the Association are today playing in the over all political, economic and social developments in various parts of the world, the association exists not only as a source of inspiration to international students and center reflection on what duties they owe to their mother lands, but also to embrace Lincoln University's New Program of "Not existing to serve the Negro population alone, but to provide a living laboratory of cooperation and mutual understanding through Education and Brotherhood."

The organization has now fulfilled this need, but has extended its functions to include a program which enhances the community both in various social and cultural aspects.

OFFICERS

James Washington	President
Sunday Ette	Vice-President
Sylvester Murray	Secretary

Y. M. C. A. Cabinet



SEATED, Left to Right: D. Jay, D. McMeans, F. Baron, R. McCaskill, S. Murray, E. Wimbish, Advisor. STANDING: S. Adams, C. Morris, G. Kent, U. Warrick, A. McNeal, M. Edmead, E. McNeill, J. Washington, A. Jolloh.

The Lincoln University Y-Cabinet is an affiliated branch of the Young Men's Christian Association of the United States. Its purpose is to create, maintain and extend throughout the school and community high standards of Christian character and to promote the cultural and recreational activities of the University.

OFFICERS

President	Freddie Baron
Vice President	Donald McMeans
Secretary	Ronald McCaskill
Treasurer	Sylvester Murray
Advisor	Emery Wimbish

N. A. A. C. P.



SEATED, Left to Right: J. Warrick, W. Scott, C. Morris, A. Ashe, C. Ballard. STANDING: J. Washington, S. Bennett, J. Royall, N. Thompson, J. Dickerson, H. Smith, I. Browne, A. Edmiston, J. Douglas, G. Bain, C. Stewart, R. Hudson.

The Lincoln University Chapter of the National Association for the Advancement of Colored People was founded on our campus for the overcoming of the evils of segregation that exist within the sphere of our general surroundings. The members have pledged themselves to continue their fight and to support the fight of others for the downfall of all discrimination.

OFFICERS

John Davis	President
Ross Ford	Vice-President
Vincent Ashe	Secretary

Pan-Hellenic Council



SEATED, Left to Right: J. Donaldson, W. Sullivan, E. Williams, D. Jay, G. Bain. STANDING: J. Royall, H. Stephenson, S. Lewis, R. Ford, H. Kent.

The Pan-Hellenic Council functions as a correlatory body between the five fraternities and the administration. The Council does not govern or regulate fraternities but rather suggest and advise the ethics by which the Chapters conduct themselves.

The Council is made up of four members from each fraternity: the president, dean of pledges, treasurer and one lay representative. Like other organizations, it sponsors various activities, but it differs in that all of its activities are for Greeks only.

OFFICERS

President	Eddy Williams
Secretary	David Jay

Varsity Club



SEATED, Left to Right: A. Bowens, D. Jay, E. Harris, L. McGee, S. Draper, L. Lockley, A. McNeal. STANDING: G. Bain, H. Stephenson, N. Campbell, W. Sullivan, J. Donaldson, L. Closson, W. King, J. Warrick, R. Ford.

The Varsity Club, an honorary organization of athletes who have won their varsity letter in some sport, has, with the aid of the Homecoming Committee, established itself as a definite part of the campus community. This organization has since its very inception had the responsibility of arranging the annual Homecoming celebration, and the selection of Miss Homecoming.



Political Science Club



SEATED, Left to Right: J. Royall, M. Lewis, A. Jalloh, L. Edmonds, I. Browne. STANDING: A. Utuk, S. Murray, C. Stewart, S. Bennett, N. Campbell, J. Washington, S. Ette, J. Ensema.

The Political Science Club was organized in 1954 by the political science majors under the guidance of Dr. Moses Lukaczer. Its objective was to promote a better understanding of various political problems and give the students of the field a chance to gain a more extensive knowledge of the field. The club furthers their aims by sponsoring panel discussions and lectures by prominent speakers.

OFFICERS

Webster Fitzgerald President
John Davis Secretary



History Club



SEATED, Left to Right: J. Warrick, M. Sirmans, N. Campbell. STANDING: D. Jay, A. Edminston, A. Bowens.

The Carter G. Woodson Historical Society was organized at Lincoln University in the autumn of 1956. The society is open to all students who are interested in the study of history. Senior members of the Society inaugurated a tutorial program in the freshman history courses which proved to be very successful. Speakers from the surrounding area have addressed the group on local history.



Philosophy Club



SEATED, Left to Right: F. Baron, M. Sirmans, D. Jay. STANDING: B. King, E. McNeill, H. Kent, J. Donaldson.

Under the direction of Dr. Elizabeth Beardsley the Philosophy Club has brought before the students of Lincoln University, a well balanced program of guest speakers and panel groups.

This was done in an attempt to stimulate further interest in philosophy and psychology. The Philosophy Club further strives to serve as an outlet for creative thought.



African Students Association



Our changing scene has seen Lincoln grow from a University for the education of American Negroes to one that invites all to enter. This is in line with Lincoln's new policy of over-all integration. Most of the students from Africa who are here are representatives of nations which received their independence this past year. This is recognized as a giant cornerstone in the building of a free Africa.

OFFICERS

Sunday Ette	President
Abdul Jalloh	Vice President
Victor Uffen	Secretary



Social Science Club



SEATED, Left to Right: W. Ingram, D. Jay, M. Sirmans. STANDING: C. Stewart, E. McNeill, J. Dickerson, S. Andrews, F. Baron, S. Bennett.

The Social Science Club is also one of the newer clubs on campus. Like many of the other clubs its organization stemmed from the profound interest of the professors and students of the Social Science Department. Its purpose is to give the social science students additional theoretical and practical knowledge of the social sciences through field trips, lectures and panel discussions. Like other organizations related to courses, its objective is to improve the performance of the students in the field.

OFFICERS

James Washington	President
Sunny Andrews	Vice-President
Frederick Baron	Secretary



Chess Club



SEATED, Left to Right: H. Minus, W. Lakins, M. Sirmans. STANDING: S. Andrews, T. Taliaferro, H. Hord.

Although it is one of our most recently organized campus activities, the Chess Club is quite active and it shows promise of becoming one of our largest clubs. The members meet informally each week to play and analyze their game.



Nigerian Student Association



The Nigerian Student Association is composed of students from all parts of Nigeria. They represent different tribes and cultures. Many famous Nigerians have come to Lincoln and have contributed greatly to Lincoln's prestige abroad. Ernest Azikiwe, the brother of the Prime Minister of Nigeria (a Lincoln graduate) is enrolled in the Freshman Class.



Student Senate



SEATED, Left to Right: L. Lockley, S. Draper, H. Stephenson, J. Donaldson, G. Bain, G. Brooks, J. Montgomery, R. McCaskill. STANDING: C. Morris, J. Davis, C. Leftridge, H. Thompson, M. Edmead, H. Kent, J. Douglas, W. King, R. Ford, L. Edmonds, J. Warrick, S. Lewis.

One of the most prominent organizations on campus is the Student Senate. It is set up as a legislative body that represents the students. An analysis of the Student Senate shows that it is very representative of the student-body since it contains a cross-section of the campus.

Moreover, like other organizations the Student Senate sponsors chapel programs, recitals and week ends. This year it was instrumental in obtaining many conveniences for the student-body.

OFFICERS

James Donaldson	President
Herman Stephenson	Vice President
Granville Bain	Secretary
Glenwood Brooks	Treasurer



Omega Psi Phi Fraternity, Inc.



1st ROW: T. Taliaferro, W. Jefferson, A. Pickering, J. Royall, G. Jones, P. Hall, R. Mann, M. Bates. 2nd ROW: T. Guarrant, R. Betz, M. Lewis, P. Morris. 3rd ROW: R. Lawrence, M. Lawrence, G. Brooks, W. Lawrence. 4th ROW: L. Billups, L. Edmonds, C. Dixon, C. Leftridge, R. Clough. 5th ROW: W. King, J. Stancil, E. Simpkins, C. Ballard, C. Morris, E. Manderville, G. Bain. 6th ROW: C. Saunders, G. Anderson, C. Stewart, J. Anthony, R. Sherrod, R. Harrison, H. Judson, H. Stephenson.

Almost forty-seven years ago, November 17, 1911, Omega Psi Phi Fraternity originated at Howard University. The advent of beta Chapter on Lincoln University's campus occurred February 13, 1914, in the residence of our fraternity sister, Mrs. Lottie Wilson, who for her loyalty to the cause of Omega, was accepted into the brotherhood as a real member, and is the only woman ever to receive this recognition.

Alpha Phi Alpha



SEATED, Left to Right: V. Bridgewater, A. Edminston, H. Minus, G. Kent, E. Harris, R. Hudson, S. Murray, J. Butler. STANDING: C. Yancey, H. Hoard, S. Jacobs, I. Browne, R. Johnson, L. M. Evans, W. Scott, R. Edwards, E. Emanuel. BACK ROW: R. Covington, W. Bogan, W. Ingram, J. Donaldson, D. Hughes.

The aims of Alpha Phi Alpha are inscribed in the Fraternity hymn. These aims are manly deeds, scholarship and love for all mankind. Principles and ideas remain only theoretical items of no practical value if no earnest work is devoted to them. In the past Nu Chapter has made many outstanding contributions to give these ideas and principles actual practical value. It has sponsored many humanitarian affairs both for campus and community. One can really see the truth in the saying from the prayer, "The House of Alpha," GOODWILL IS THE MONARCH OF THIS HOUSE.

OFFICERS

President	Eddie Harris
Vice President	Robert Hudson
Secretary	Donald McMeans
Treasurer	Clarence Staplefoot
Corresponding Sec.	Howard Kent

Kappa Alpha Psi Fraternity



1st ROW: C. Andrews, D. Wilkerson. 2nd ROW: D. Jay, S. Lewis, D. Walker, R. Nickens. 3rd ROW: E. Harris, E. Hatton, D. Jones, C. Pratt. 4th ROW: E. Woods, J. Spencer, F. Holland, F. Smith. BACK ROW: W. Sullivan.

Epsilon Chapter, founded in 1915, has throughout the years held fast to the high ideals of Kappa Alpha Psi. This is exemplified by its sponsorship of an Annual Oratorical Contest for Freshmen and a Guide Right Week Program and by the active interest its members take in all phases of campus life.

OFFICERS

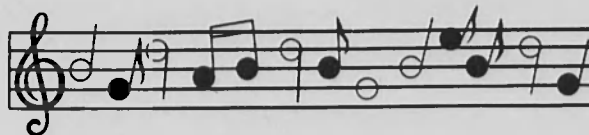
Polemarch	Spencer Lewis
Keeper of Records	David Jay
Keeper of Exchequer	Ross Ford

Glee Club



SEATED: N. Thompson, pianist. STANDING, Left to Right: R. Blackston, C. Johnson, R. Randleman, C. Morris, E. McNeill, J. Warrick, B. Floyd, T. Guerrant, J. Crowder, D. Hughes. 2nd ROW: E. Emanuel, C. Diggs, S. Dixon, E. Harris, J. Montgomery, W. Lawrence, M. Lewis, R. Johnson, W. Haines, C. Stewart. 3rd ROW: C. Ballard, M. Lawrence, L. Edmunds, E. Hoagland, W. Ingram, J. Pruitt, W. Ravenall, V. Bridgewater, R. McCaskill. Orrin Suthern, II, directing.

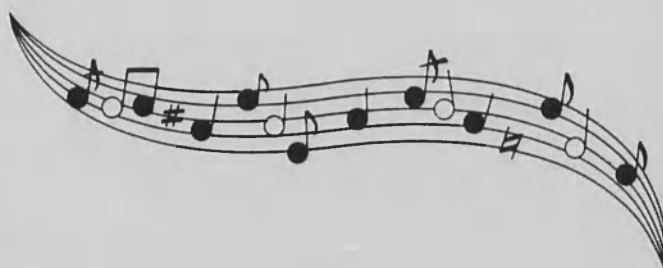
The Lincoln University Glee Club is one of three choral groups on the campus. The Glee Club, nearing its 40th year of continuing organization, functions as the musical ambassador for the University at all major chapel assemblies. The Glee Club sings an annual program preceding the Christmas holidays, as well as concerts in the Spring and Commencement. At these concerts the Glee Club presents outstanding young musicians as guest-artist. The repertory of this group is varied and interesting since the Glee Club sings choral music from Palestrina to the current musical stage.



Ensemble

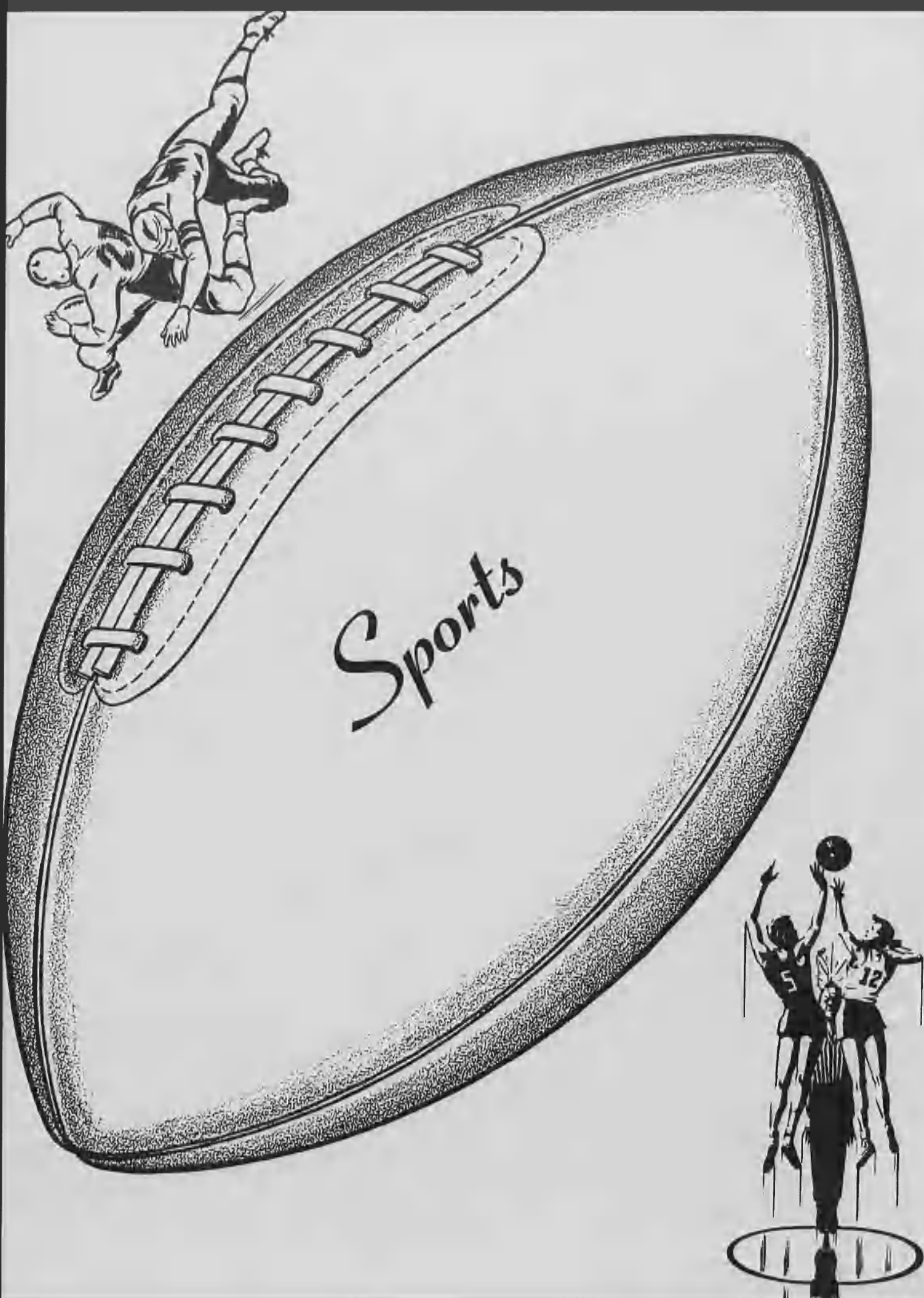


The University Ensemble is a group of fourteen voices whose principle duty is to furnish the music for the Sunday Chapel Services. The Ensemble accepts off-campus engagements in its own right, and sings as varied a program as the Glee Club.



ORRIN CLAYTON SUTHERN, II
B.A., Western Reserve University
M.A., Teachers College, Columbia University

Trainer and conductor, Professor Orrin Clayton Suthern, II, is now in his 11th year at Lincoln. In addition, Mr. Suthern plays a series of Vesper Organ Recitals throughout the year, drawing on his vast repertory for the programs of academic interest as well as listening pleasure.



Sports

Football



1st ROW: L. Lockley, T. Hayden, L. Harris, R. Boyd, D. Beamon, L. Tull, L. Randolph, W. Lawrence. 2nd ROW: J. Montgomery, C. Woodard, C. Saunders, C. Gibson, B. Morris, H. Shelton, R. Lawrence. 3rd ROW: H. Judson, K. Barnes, M. Winningham, R. Lovelace, J. Donaldson, L. Bethel, M. Felton, S. Dixon, L. Mayo, W. King.

COACH: Robert N. Gardner



MISS HOMECOMING AND ATTENDANTS



Left to Right: Myra Only (Miss Homecoming), Jean Thompson, Sylvette Maxwell, Elizabeth Hawkins, Bernice Brooks.



Lazy Cheerleaders!



The Rabble

Did It Work?





Basketball

Up boy!



Left to Right: W. Sullivan, M. Lawrence, A. Jordan, W. MacKelvin, R. Randolph, R. Ford, C. Barnes.

Soccer



KNEELING: D. Brooks, B. Schowgurow, G. Jones, J. Butler, V. Uffen, B. Dakuginow, I. Browne. STANDING: Coach, E. Azikiwe, H. Ewing, R. Carter, E. Coates, D. Virgil, V. Bridgewater, O. Walls, manager.

The Lincoln University Soccer Team made a beautiful showing on the soccer field during this past season. Boasting a 7-2 record for the year, the soccer team has given our athletic department new hope. Led by Earnest Azikiwe, Victor Uffen and Bemba Dakuginow, the team bowled over most of their opponents.



Track



Cross Country



BIG DAY!



EDDY WILLIAMS



LEONARD BILLUPS, EDDY WILLIAMS, NORMAN (STASH) CAMPBELL.

KNEELING: W. Coleman, J. Woods, K. Williams, E. Williams.
STANDING: G. Stevens, L. Billups, N. Campbell, C. Small, D. Walker.



Wrestling



1st ROW: L. Tull, G. Reese, A. Bragg, J. Butler, J. Haines (Captain). STANDING: R. Clough, D. Simpson, R. Lawrence, J. Montgomery, H. Judson, L. Billups.

SENIOR LETTERMEN



John W. Haines, Captain



Leonard H. Billups









Rabble on . . .













The Week . . .



That's All!

The Week . . .



That's All!

Autographs

